



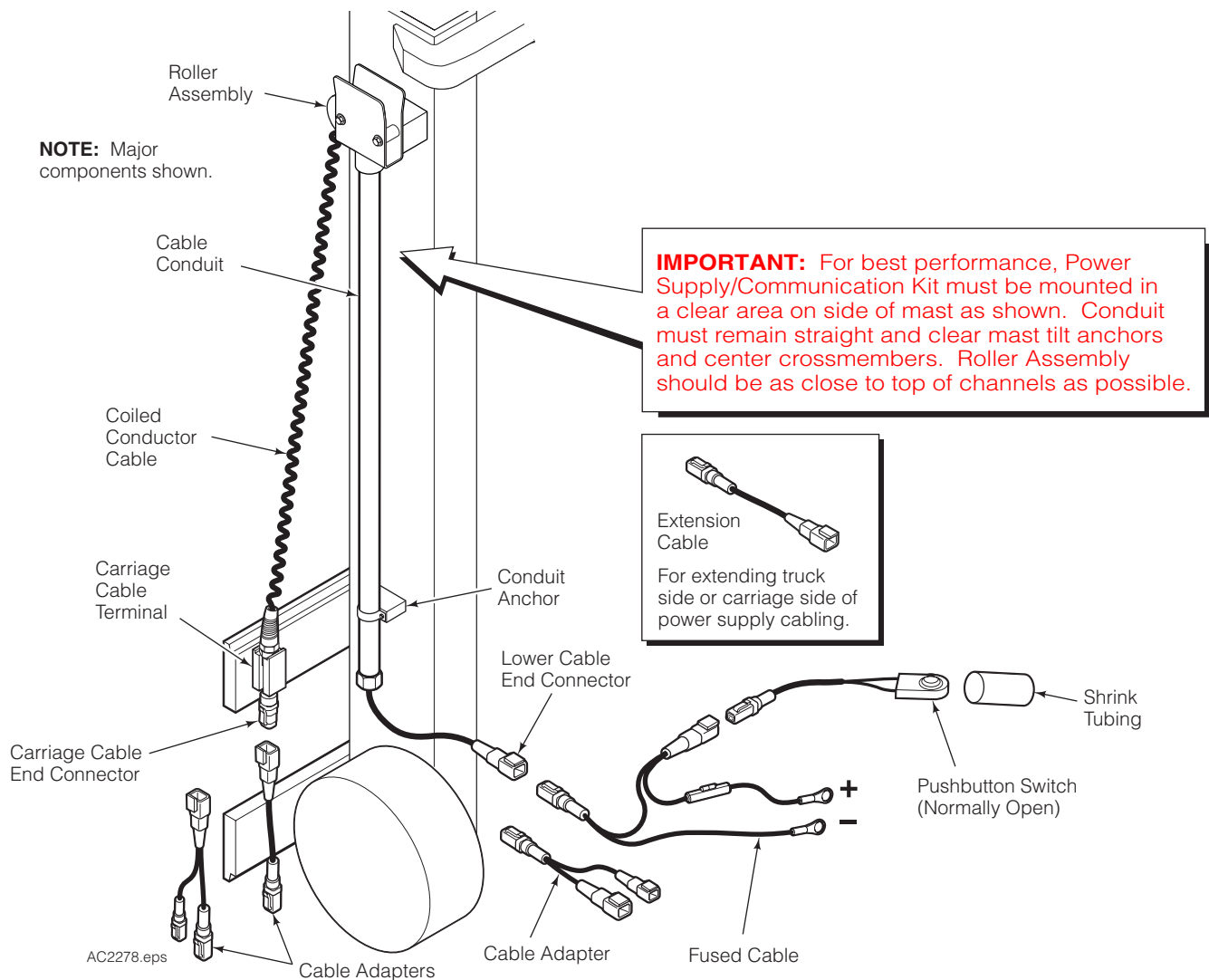
All steps of these instructions must be carefully followed to preserve warranty coverage.

# Installation Instructions

## UL Classified Power Supply/Communication Groups

This manual provides installation instructions for Cascade Power Supply/Communication Kits for simplex, dual and triple-stage masts. (Contact Cascade for quad mast application). The kit (refer to next page) is a compact two, four or six-conductor electrical supply/communications cable that provides a connection between the truck's electrical circuit and a carriage mounted attachment equipped with electrical and electronic components. The kit greatly improves driver visibility over alternative cable reels.

**NOTE:** UL Classified Kits require installation by qualified personnel only without major disturbance, cutting, splicing for soldering of factory installed wiring.



**cascade**<sup>®</sup>  
corporation

**For Technical Support . . .**

Call: 1-800-227-2233 Fax: 1-888-329-8207  
Internet: [www.cascorp.com](http://www.cascorp.com)  
Write: Cascade Corporation, PO Box 20187, Portland, OR 97294

**To Order Parts . . .**


Call: 1-888-227-2233 Fax: 1-888-329-0234  
Internet: [www.cascorp.com](http://www.cascorp.com)  
Write: Cascade Corporation, 2501 Sheridan Ave., Springfield, OH 45505



Cascade Corp.  
File# AU3546

BLANK

**NOTE:** Kits are UL Classified (File # AU3546) for safety in Electric Battery (UL 583) and IC Engine (UL 558) Indust. Truck type E, ES, G, GS, G/LP/ GS/LPS, LP, LPS, D and DS.

	<p><b>WARNING:</b> For UL Classified kits, to reduce the risk of fire, replace only with same type and rating of fuse.</p>
---	--

<b>Power Supply Group</b>	<b>Maximum Mast<sup>①</sup> Fork Height (in.)</b>	<b>Conductors<sup>②</sup> (No. @ AWG)</b>	<b>Supply Application</b>
6029814	166	2 @ 18	Generic – Switched, 12V
6809410	166	2 @ 18	Generic – Switch, 24-48V
6029815	166	2 @ 18	ERC – Unswitched
6030237	166	4 @ 26	AFC – Unswitched
6030242	166	2 @ 20 & 4 @ 26	AFC & ERC – Unswitched
6001133	188	2 @ 18	Generic – Switched, 12V
6809414	188	2 @ 18	Generic – Switch, 24-48V
6001137	188	2 @ 18	ERC – Unswitched
6001135	188	4 @ 26	AFC – Unswitched
6001136	188	2 @ 20 & 4 @ 26	AFC & ERC – Unswitched
6029348	218	2 @ 18	Generic – Switched, 12V
6809415	218	2 @ 18	Generic – Switch, 24-48V
6029816	218	2 @ 18	ERC – Unswitched
6030299	218	4 @ 26	AFC – Unswitched
6030294	218	2 @ 20 & 4 @ 26	AFC & ERC – Unswitched
228174	240	2 @ 18	Generic – Switched, 12V
6809416	240	2 @ 18	Generic – Switch, 24-48V
228719	240	2 @ 18	ERC – Unswitched
228175	240	4 @ 26	AFC – Unswitched
228176	240	2 @ 20 & 4 @ 26	AFC & ERC – Unswitched
6016846	320	2 @ 18	Generic – Switched, 12V
6809417	320	2 @ 18	Generic – Switch, 24-48V
6016847	320	2 @ 18	ERC – Unswitched
6003598	320	4 @ 26	AFC – Unswitched
6030344	320	2 @ 20 & 4 @ 26	AFC & ERC – Unswitched

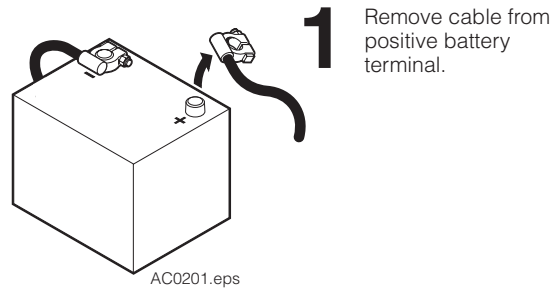
① Simplex, dual or triple masts only.

② Do not use 26 AWG for high voltage or high current applications. (20 AWG rated @ 5A, 26 AWG rated @ .25A)

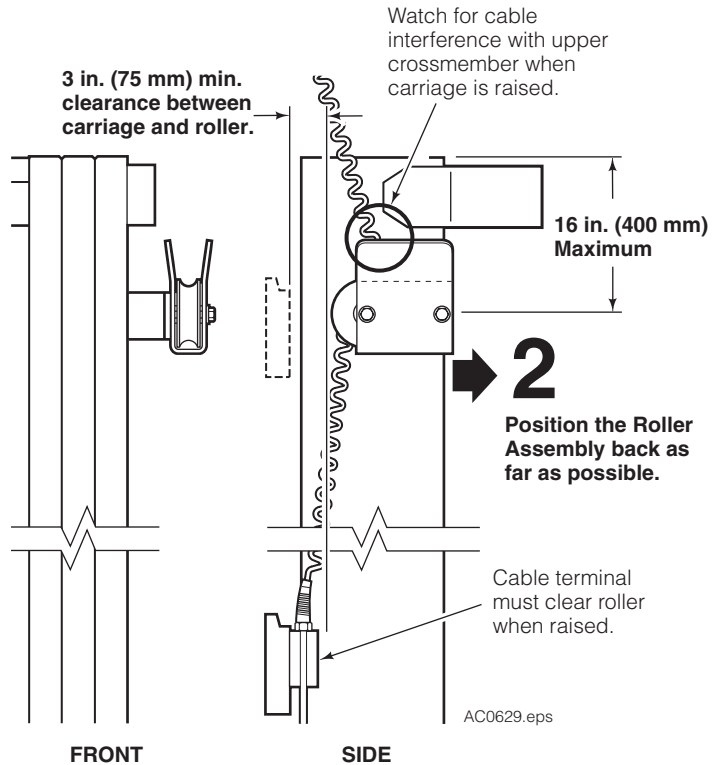
## Power Supply/Communication Kit Installation

**IMPORTANT:** Check that the Power Supply/Communication Kit is appropriate for the truck mast's maximum fork height (MFH).

**1** Disconnect the cable from the positive battery terminal.



**2** Determine a mounting location for the roller assembly on the mast upper outer rail. Locate the roller assembly as far back (toward rear of mast) as possible, watching for clearance problems with the upper crossmember. The cable terminal must clear the roller assembly by a minimum of 3 in. (75 mm) when the carriage is raised.



**3** Mark a mounting location for the roller assembly spacer block on the mast outer rail. If the spacer cannot be mounted to the side of the mast, an alternate mounting such as an L-shaped bracket attached to the back of the mast outer rail should be used, as shown.

**4** Grind the spacer mounting area on the mast to bare metal. Prep the mounting surface of the spacer with a grinder, leaving a coarse surface. Clean the contact areas with contact or brake cleaner. Surface prep is critical for the adhesive to bond properly to the metal.

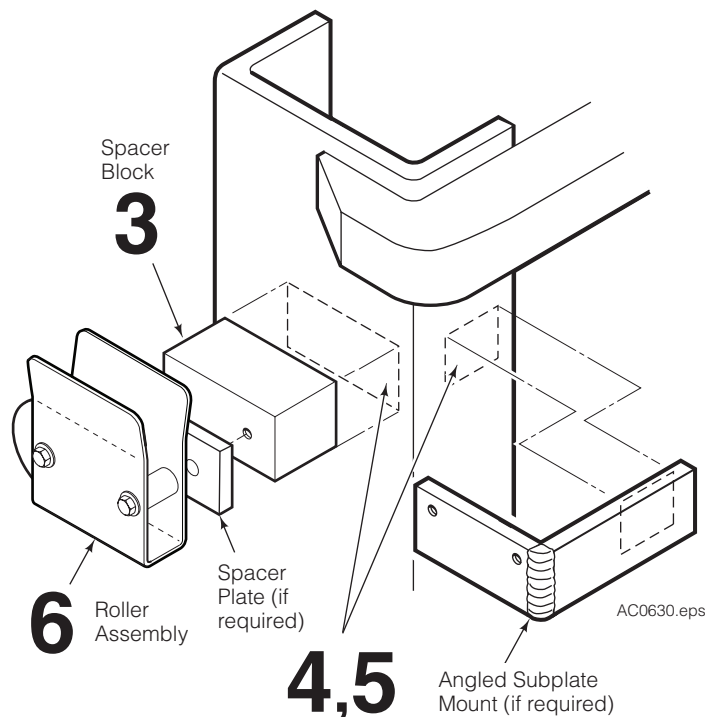
**5** Mix and apply adhesive (user supplied) to attach the subplate to the mast rail. Adhesives approved for this installation:

- Loctite 332 with Activator 7380
- Devcon S-220 two part epoxy
- Devcon Plastic Welder 14320
- JB Weld 8265-S

Apply per manufacturer's instructions.

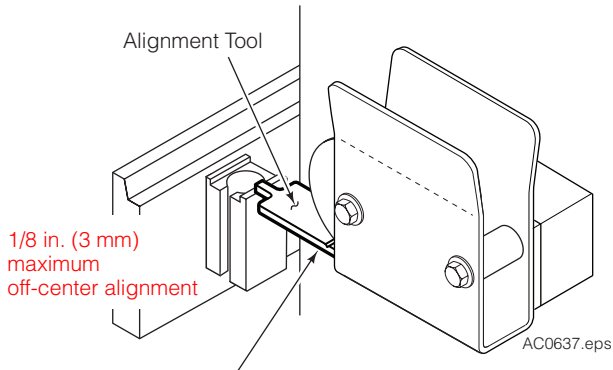
**IMPORTANT:** Remove adhesive residue from hands immediately. Once dry it is permanent to your skin.

**6** Temporarily install the roller assembly to the spacer block. Use the spacer plate and longer capscrews if required for conduit clearance on the mast. Leave the capscrews finger tight.



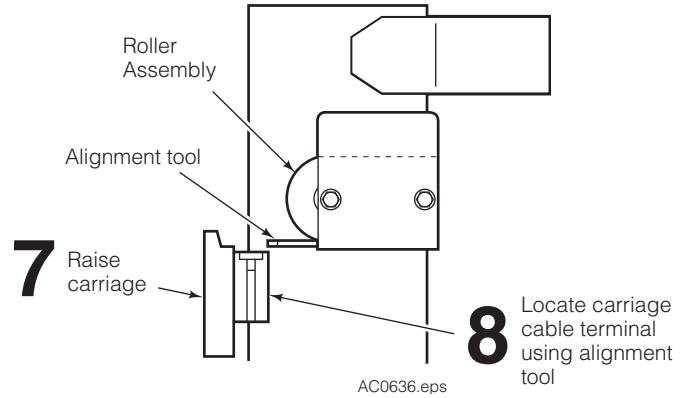
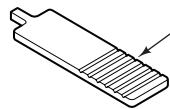
**WARNING:** If welding is used to attach the spacer block to the mast, weld modifications to the mast rails must be approved by the mast OEM.

- 7 Raise and position the upper carriage bar just below the roller assembly.
- 8 Locate and mark a mounting location for the carriage cable terminal on the back side of the upper carriage bar. Use the alignment tool to center the cable terminal block on the carriage bar. Tool length can be adjusted by breaking off the end at the required length.

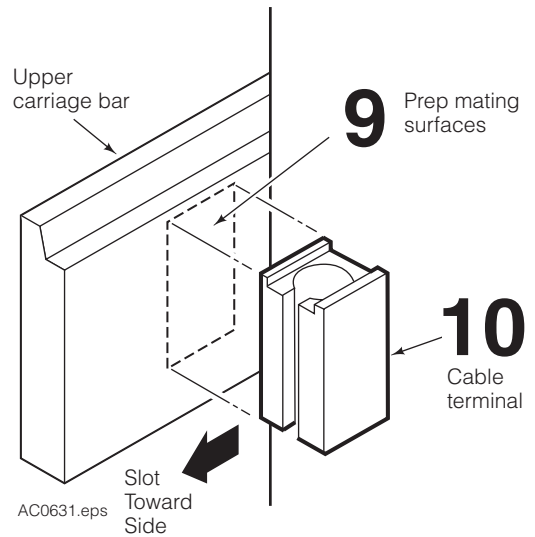


- 8 Center cable terminal with roller  $\pm 1/8$  in. (3 mm)

Break off tool end at required length



- 9 Grind the carriage cable terminal mounting area to bare metal. If using adhesive, prepare the mounting surface of the cable terminal with a grinder, leaving a coarse surface. Clean the area with contact or brake cleaner. A coarse surface is critical for the adhesive to bond properly to the metal.

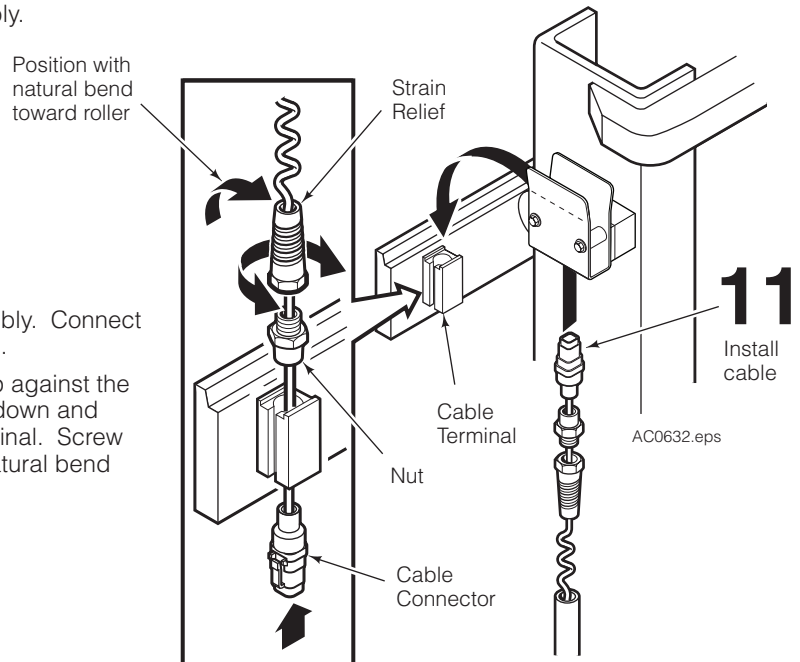


- 10 Attach the cable terminal to the carriage by using adhesive or by welding.

**IMPORTANT:** Cable slot must be toward the side as shown. Check alignment with roller assembly.

- 11 Install the cable up through the roller assembly. Connect the cable end to the carriage cable terminal.

**IMPORTANT:** Push the cable connector up against the bottom of the cable terminal. Push the nut down and engage the flats in the top of the cable terminal. Screw on the strain relief and position it with the natural bend back toward the roller.



- 12** Locate and mark the side of mast rail for the cable conduit lower anchor.

**CAUTION:** Make sure cable conduit is aligned vertically and mounted as straight as possible with no large bends. Do not cut or trim cable conduit.

- 13** Remove the cable from the roller assembly. Join the cable end connectors together.

**IMPORTANT:** If the cable end is released and gets stuck inside the cable conduit, use a coat hanger or welding rod to retrieve the cable end. The end is about 10 in. inside the housing.

- 14** Grind the lower spacer mounting area on the mast to bare metal. Prep the mounting surface of the lower spacer with a grinder, leaving a coarse surface. Clean the contact areas with contact or brake cleaner. Surface prep is critical for the adhesive to bond properly to the metal.

- 15** Mix and apply adhesive to the lower spacer. **Keep adhesive out of the threaded holes.** Position the lower spacer on the mast. Hold in place until the adhesive sets per manufacturer's directions.

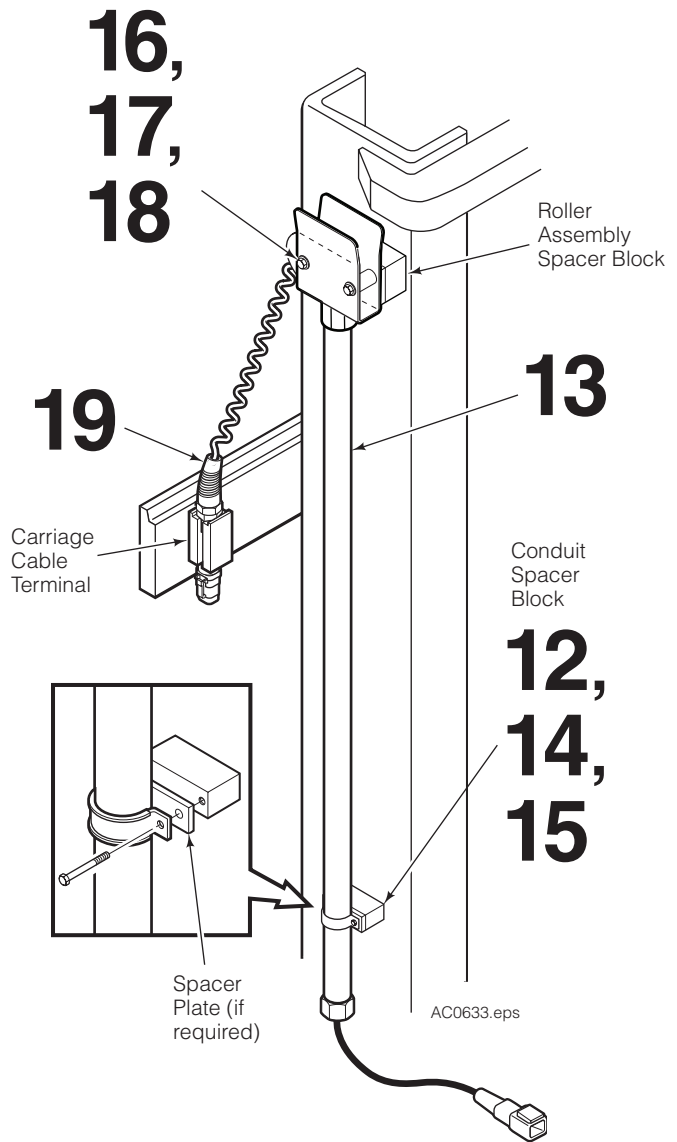
- 16** Remove the roller assembly from upper spacer.

- 17** Apply thread lock to the mounting capscrews.

- 18** Install the roller assembly, conduit and cable clamps. Use the spacer plate and longer capscrews if required for conduit clearance on the mast.

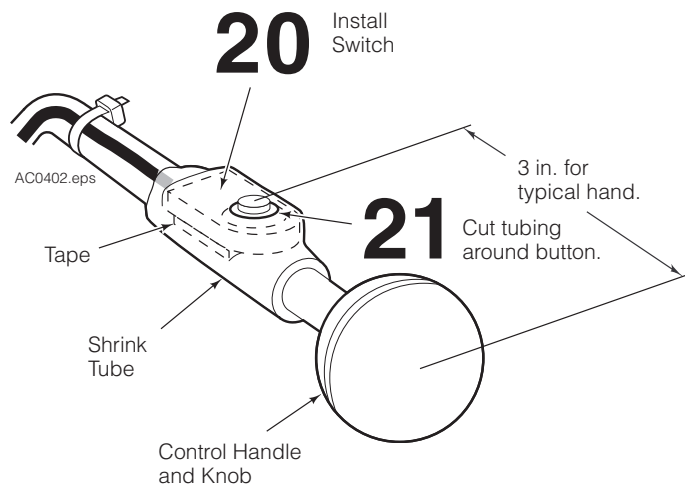
**IMPORTANT:** If a spacer block needs to be removed, tap the glue joint with a chisel and it will separate. Remove all adhesive from the mating parts, clean and reapply per manufacturer's directions.

- 19** Connect the cable end to the carriage cable terminal.

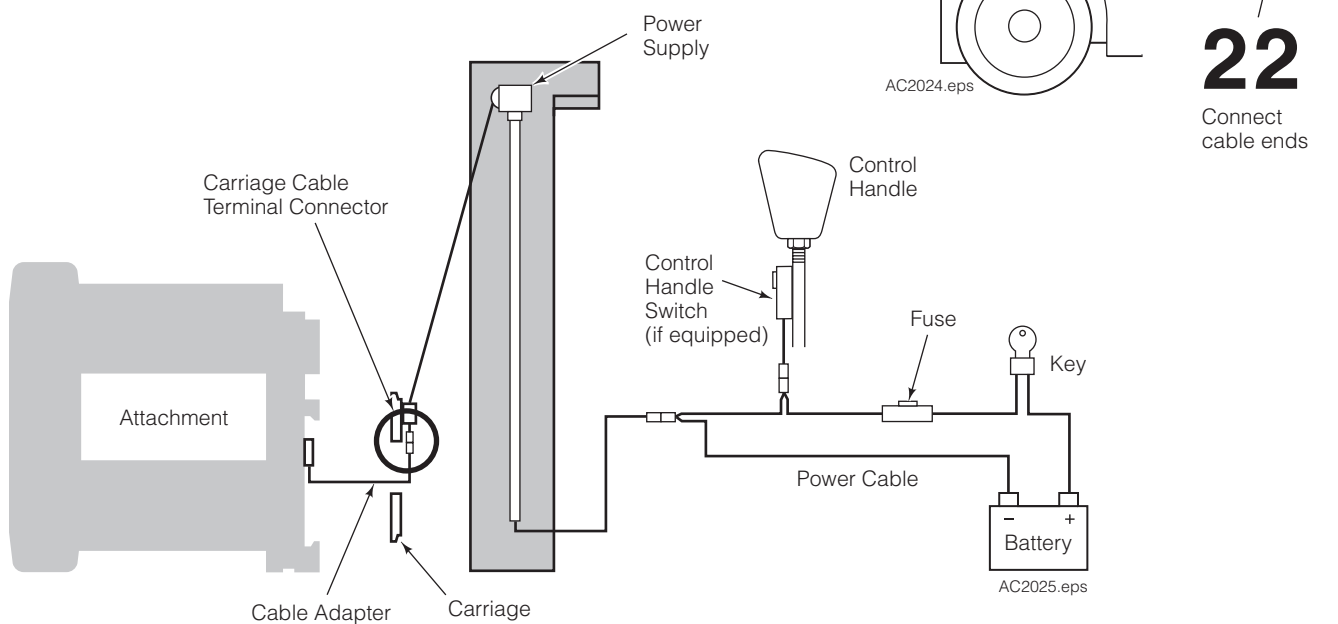


- 20 Control Handle Switch (if equipped)** – Install the switch to the control handle. Remove the control knob. Position the switch on the handle in a location for comfortable thumb or index finger operation. Place the double sided tape under the switch to secure the switch in place. Place the heat shrink tubing over the handle and switch. Using a heat gun, heat the tubing to secure the switch to the handle. Reinstall the knob. Install cable ties as needed for the wires.

- 21** If it is difficult to feel or operate the switch button through the heat shrink tube, carefully cut a circle out of the tubing around the button.




- 22** Connect the power cable supplied to the Power Supply lower cable end connector and truck power as marked. Watch for pinch and wear points. Install cable ties as needed.
- 23 Control Handle Switch (if equipped)** – Connect the control handle switch connector to the power cable connector. Watch for pinch and wear points. Install cable ties as needed.
- 24** Connect the attachment wires to the cable adapter supplied. Connect to the carriage cable terminal connector. Watch for pinch and wear points. Install cable ties as needed.



- 25** Connect the battery cable to the positive battery terminal.
- 26** Test the electrical functions for proper operation. Raise and lower the mast to check the coil cable for proper alignment, extension and retraction.

**IMPORTANT:** Spray the coil cord, roller and inside of conduit with a Teflon based dry film lubricant similar to McGee McLube 1700L or Dupont Dryfilm WDL-10A. The lubricant significantly reduces wear on the coil cord and provides smooth coil extension and retraction.



**WARNING:** For UL Classified kits, to reduce the risk of fire, replace only with same type and rating of fuse.

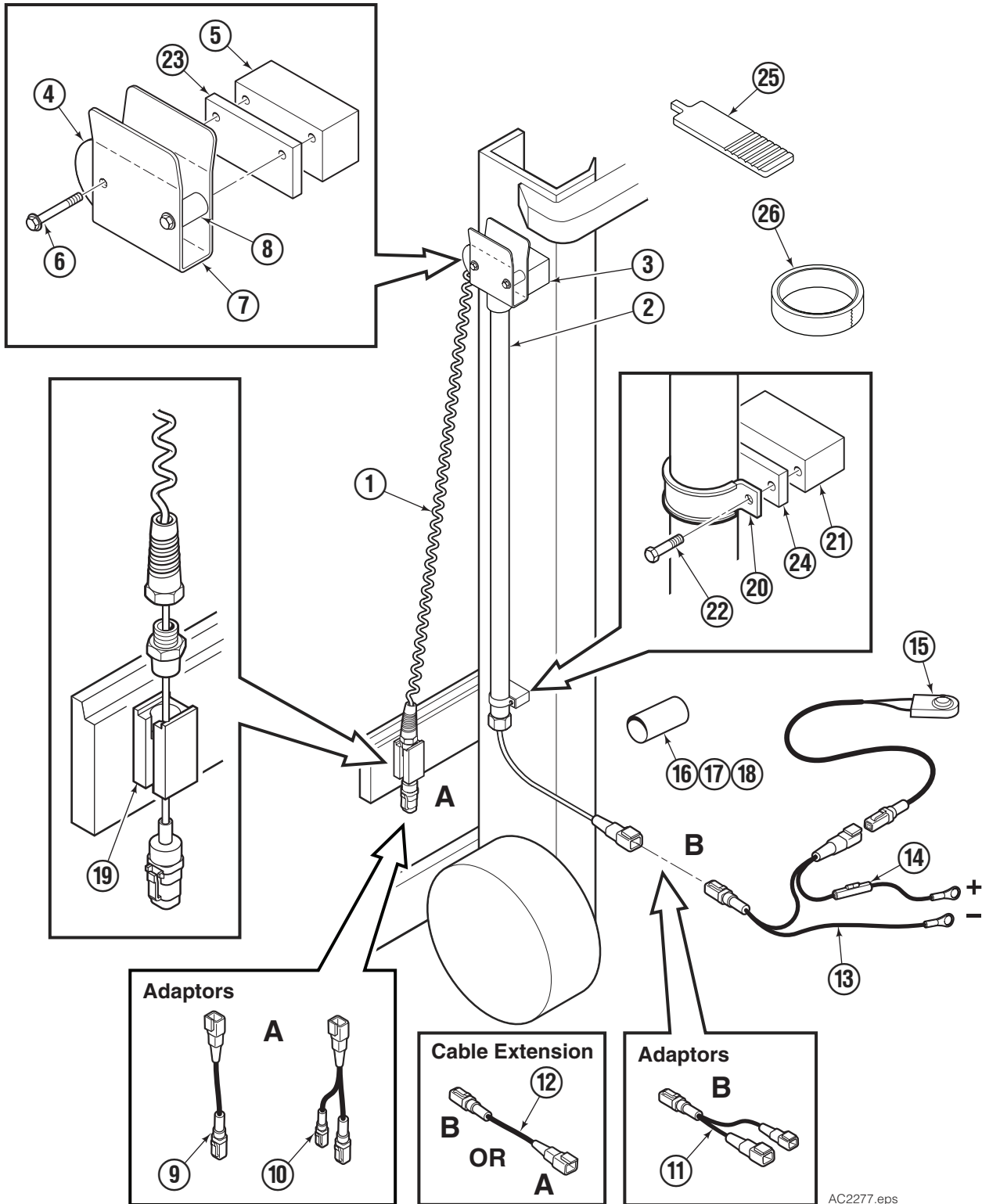
## Coil Cord Maintenance

**Lubrication** – Every three months, spray the coil cord with a Teflon based dry film lubricant. See description above.

**Cord Tension** – The coil cord can be retensioned by pulling a maximum of 10 coil loops out of the clamp at the bottom of the cable assembly.

# Power Supply/Communication Groups

Maximum Mast Fork Height – 166 in.





# Power Supply/Communication Groups

## Maximum Mast Fork Height – 166 in.

Power Supply Group	Maximum Mast <sup>①</sup> Fork Height (in.)	Conductors <sup>②</sup> (No. @ AWG)	Supply Application
6029814	166	2@ 18	Generic – Switched, 12V
6809410	166	2 @ 18	Generic – Switched, 24V-48V
6029815	166	2 @ 18	ERC – Unswitched
6030237	166	4 @ 26	AFC – Unswitched
6030242	166	2 @ 20 & 4 @ 26	AFC & ERC – Unswitched

① Simplex, dual or triple masts only.

② Do not use 26 AWG for high voltage or high current applications.  
(20 AWG rated @ 5A, 26 AWG rated @ .25A)

AFC: Adaptive Force Control

ERC: Electronic Rotational Control

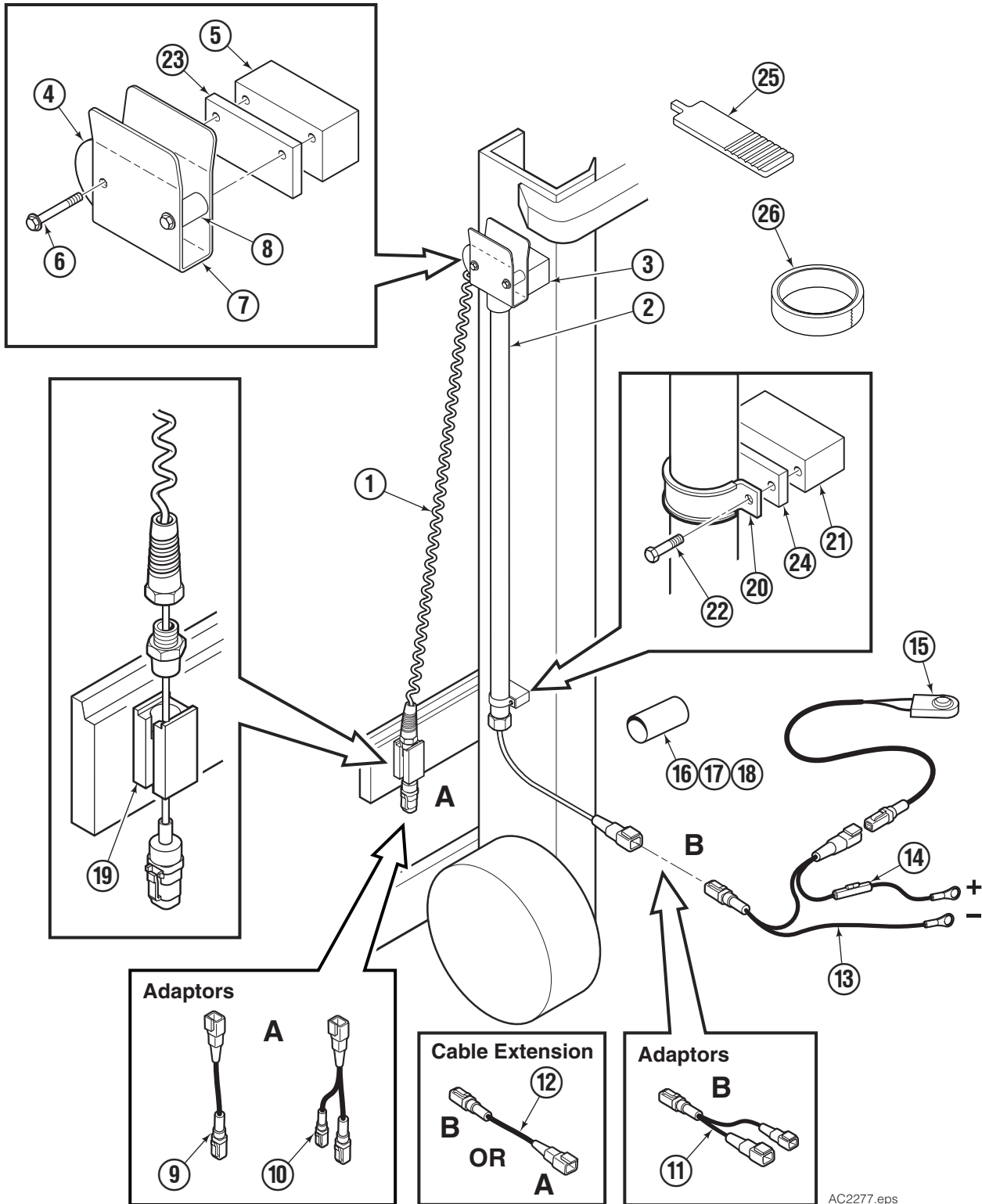
REF	QTY	PART NO.	PART NO.	PART NO.	PART NO.	PART NO.	DESCRIPTION
		6029814	6809410	6029815	6030237	6030242	Power Supply Group
1	1	6086018	6086018	6086018	6030239	6030263	Cable Assembly
2	1	6030190	6030190	6030190	6030190	6030190	Conduit
3	1	223678	223678	223678	223678	223678	Sheave Assembly
4	1	223680	223680	223680	223680	223680	Sheave ●
5	1	228679	228679	228679	228679	228679	Spacer Block ●
6	2	228704	228704	228704	228704	228704	Capscrew, M8 x 45 ●
	2	6030447	6030447	6030447	6030447	6030447	Capscrew, M8 x 50 ■
	2	6030449	6030449	6030449	6030449	6030449	Capscrew, M8 x 60 ■
7	1	223679	223679	223679	223679	223679	Bracket ●
8	2	223681	223681	223681	223681	223681	Bearing ●
9	1	—	—	—	6017922	6017922	Cable Adapter
10	1	—	—	—	—	6001544	Cable Adapter
11	1	—	—	—	—	6001545	Cable Adapter
12	1	6821338	6821338	6821338	—	6821338	Cable Extension, 3 m
13	1	6001647	6811810	—	—	—	Wire Harness – Power
14	1	—	6806701	—	—	—	Fuse, 2 Amp, UL Classified
	1	6806708	—	—	—	—	Fuse, 5 Amp, UL Classified
	1	219414	—	—	—	—	Fuse, ATC-10, Non UL Classified
15	1	6001637	6001637	—	—	—	Switch
16	1	6001641	6001641	—	—	—	Shrink Tube, 50 ID x 75 mm
17	1	6026933	6026933	—	—	—	Shrink Tube, 28 ID x 75 mm
18	1	6026934	6026934	—	—	—	Shrink Tube, 50 ID x 75 mm
19	1	223698	223698	223698	223698	223698	Anchor
20	1	6001442	6001442	6001442	6001442	6001442	Clamp
21	1	6001452	6001452	6001452	6001452	6001452	Spacer Block
22	1	680218	680218	680218	680218	680218	Capscrew, M6 x 12
	1	206321	206321	206321	206321	206321	Capscrew, M6 x 16 ■
	1	763169	763169	763169	763169	763169	Capscrew, M6 x 20 ■
23	2	6026756	6026756	6026756	6026756	6026756	Spacer Plate ■
24	2	6026763	6026763	6026763	6026763	6026763	Spacer Plate ■
25	1	6027117	6027117	6027117	6027117	6027117	Alignment Tool ■
26	1	—	—	6014987	—	6014987	Adhesive Tape

● Included in Sheave Assembly 223678

■ Included in Spacer Kit 6030223

# Power Supply/Communication Groups

Maximum Mast Fork Height – 188 in.



# Power Supply/Communication Groups

## Maximum Mast Fork Height – 188 in.

Power Supply Group	Maximum Mast <sup>①</sup> Fork Height (in.)	Conductors <sup>②</sup> (No. @ AWG)	Supply Application
6001133	188	2 @ 18	Generic – Switched, 12V
6809414	188	2 @ 18	Generic – Switched, 24V-48V
6001137	188	2 @ 18	ERC – Unswitched
6001135	188	4 @ 26	AFC – Unswitched
6001136	188	2 @ 20 & 4 @ 26	AFC & ERC – Unswitched

① Simplex, dual or triple masts only.

② Do not use 26 AWG for high voltage or high current applications.  
(20 AWG rated @ 5A, 26 AWG rated @ .25A)

AFC: Adaptive Force Control

ERC: Electronic Rotational Control

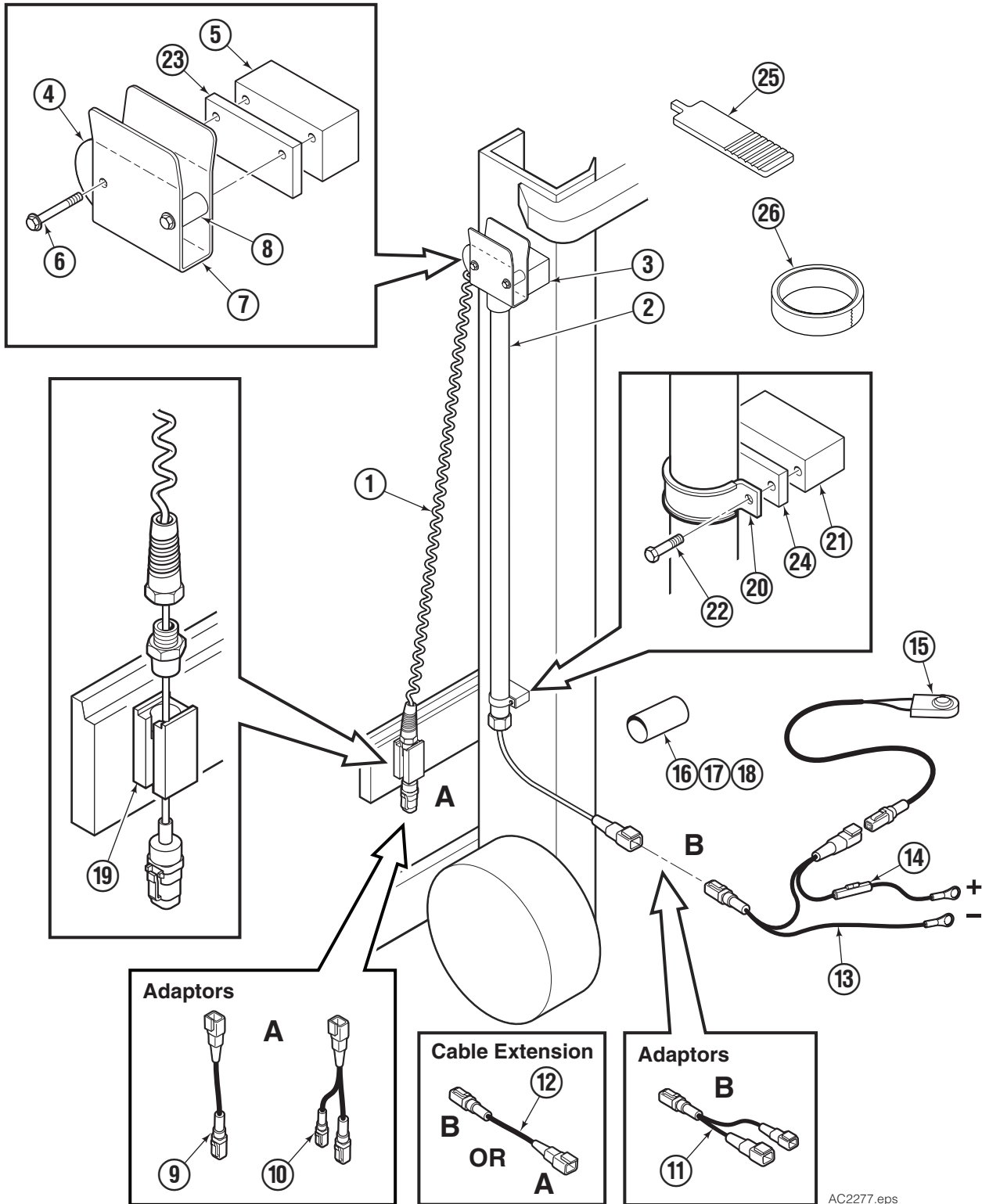
REF	QTY	PART NO.	PART NO.	PART NO.	PART NO.	PART NO.	DESCRIPTION
		6001133	6809414	6001137	6001135	6001136	Power Supply Group
1	1	6090443	6090443	6090443	6001142	6001143	Cable Assembly
2	1	6001138	6001138	6001138	6001138	6001138	Conduit
3	1	223678	223678	223678	223678	223678	Sheave Assembly
4	1	223680	223680	223680	223680	223680	Sheave ●
5	1	228679	228679	228679	228679	228679	Spacer Block ●
6	2	228704	228704	228704	228704	228704	Capscrew, M8 x 45 ●
	2	6030447	6030447	6030447	6030447	6030447	Capscrew, M8 x 50 ■
	2	6030449	6030449	6030449	6030449	6030449	Capscrew, M8 x 60 ■
7	1	223679	223679	223679	223679	223679	Bracket ●
8	2	223681	223681	223681	223681	223681	Bearing ●
9	1	—	—	—	6017922	6017922	Cable Adapter
10	1	—	—	—	—	6001544	Cable Adapter
11	1	—	—	—	—	6001545	Cable Adapter
12	1	6821338	6821338	6821338	—	6821338	Cable Extension, 3 m
13	1	6001647	6811810	—	—	—	Wire Harness – Power
14	1	—	6806701	—	—	—	Fuse, 2 Amp, UL Classified
	1	6806708	—	—	—	—	Fuse, 5 Amp, UL Classified
	1	219414	—	—	—	—	Fuse, ATC-10, Non UL Classified
15	1	6001637	6001637	—	—	—	Switch
16	1	6001641	6001641	—	—	—	Shrink Tube, 50 ID x 75 mm
17	1	6026933	6026933	—	—	—	Shrink Tube, 28 ID x 75 mm
18	1	6026934	6026934	—	—	—	Shrink Tube, 50 ID x 75 mm
19	1	223698	223698	223698	223698	223698	Anchor
20	1	6001442	6001442	6001442	6001442	6001442	Clamp
21	1	6001452	6001452	6001452	6001452	6001452	Spacer Block
22	1	680218	680218	680218	680218	680218	Capscrew, M6 x 12
	1	206321	206321	206321	206321	206321	Capscrew, M6 x 16 ■
	1	763169	763169	763169	763169	763169	Capscrew, M6 x 20 ■
23	2	6026756	6026756	6026756	6026756	6026756	Spacer Plate ■
24	2	6026763	6026763	6026763	6026763	6026763	Spacer Plate ■
25	1	6027117	6027117	6027117	6027117	6027117	Alignment Tool ■
26	1	6014987	6014987	6014987	6014987	6014987	Adhesive Tape

● Included in Sheave Assembly 223678

■ Included in Spacer Kit 6030223

# Power Supply/Communication Groups

Maximum Mast Fork Height – 218 in.



# Power Supply/Communication Groups

## Maximum Mast Fork Height – 218 in.

Power Supply Group	Maximum Mast <sup>①</sup> Fork Height (in.)	Conductors <sup>②</sup> (No. @ AWG)	Supply Application
6029348	218	2 @ 18	Generic – Switched, 12V
6809415	218	2 @ 18	Generic – Switched, 24V-48V
6029816	218	2 @ 18	ERC – Unswitched
6030299	218	4 @ 26	AFC – Unswitched
6030294	218	2 @ 20 & 4 @ 26	AFC & ERC – Unswitched

① Simplex, dual or triple masts only.

② Do not use 26 AWG for high voltage or high current applications.  
(20 AWG rated @ 5A, 26 AWG rated @ .25A)

AFC: Adaptive Force Control

ERC: Electronic Rotational Control

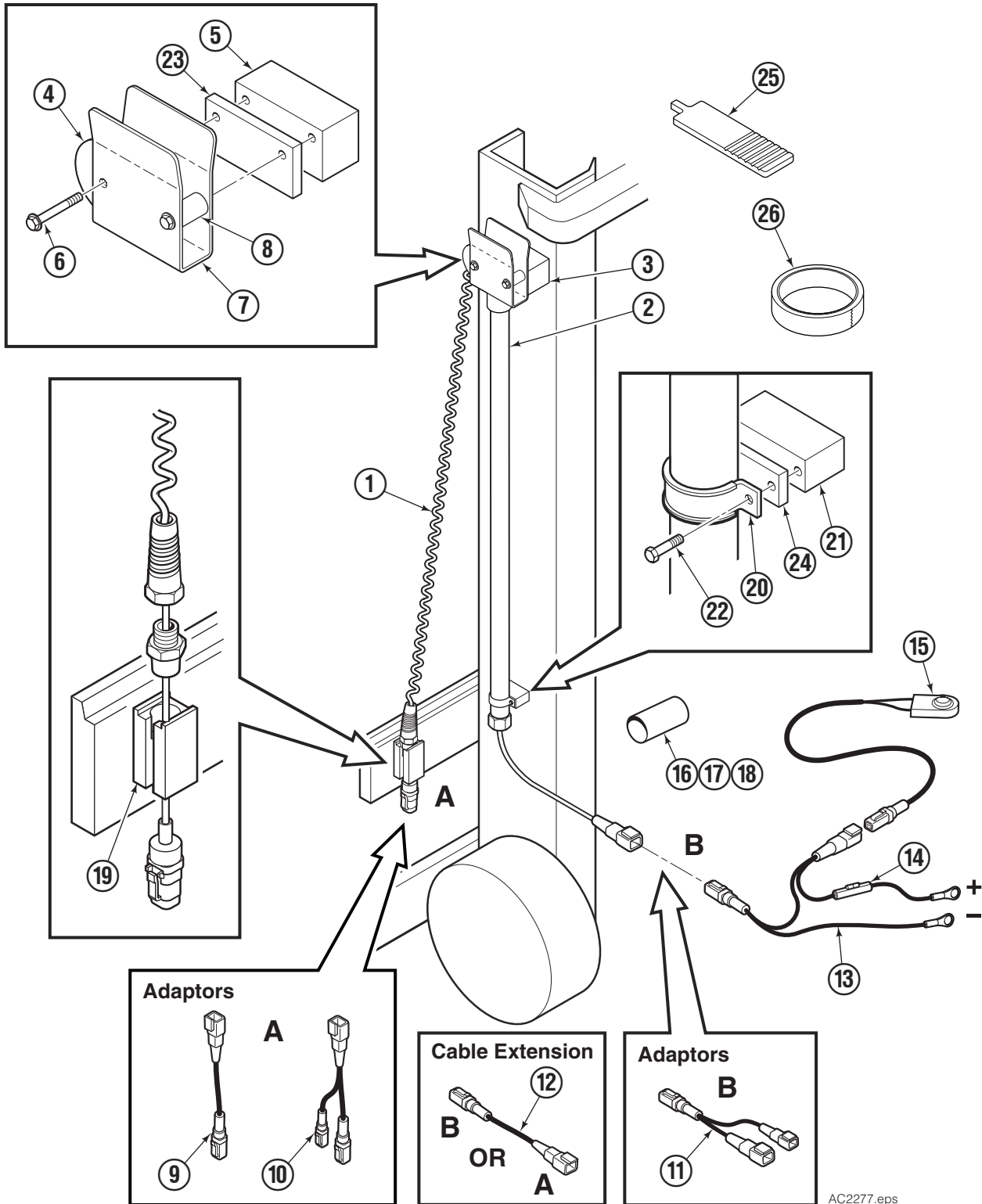
REF	QTY	PART NO.	PART NO.	PART NO.	PART NO.	PART NO.	DESCRIPTION
		6029348	6809415	6029816	6030299	6030294	Power Supply Group
1	1	6090450	6090450	6090450	6030301	6030296	Cable Assembly
2	1	6030298	6030298	6030298	6030298	6030298	Conduit
3	1	223678	223678	223678	223678	223678	Sheave Assembly
4	1	223680	223680	223680	223680	223680	Sheave ●
5	1	228679	228679	228679	228679	228679	Spacer Block ●
6	2	228704	228704	228704	228704	228704	Capscrew, M8 x 45 ●
	2	6030447	6030447	6030447	6030447	6030447	Capscrew, M8 x 50 ■
	2	6030449	6030449	6030449	6030449	6030449	Capscrew, M8 x 60 ■
7	1	223679	223679	223679	223679	223679	Bracket ●
8	2	223681	223681	223681	223681	223681	Bearing ●
9	1	—	—	—	6017922	6017922	Cable Adapter
10	1	—	—	—	—	6001544	Cable Adapter
11	1	—	—	—	—	6001545	Cable Adapter
12	1	6821338	6821338	6821338	—	6821338	Cable Extension, 3 m
13	1	6001647	6811810	—	—	—	Wire Harness – Power
14	1	—	6806701	—	—	—	Fuse, 2 Amp, UL Classified
	1	6806708	—	—	—	—	Fuse, 5 Amp, UL Classified
	1	219414	—	—	—	—	Fuse, ATC-10, Non UL Classified
15	1	6001637	6001637	—	—	—	Switch
16	1	6001641	6001641	—	—	—	Shrink Tube, 50 ID x 75 mm
17	1	6026933	6026933	—	—	—	Shrink Tube, 28 ID x 75 mm
18	1	6026934	6026934	—	—	—	Shrink Tube, 50 ID x 75 mm
19	1	223698	223698	223698	223698	223698	Anchor
20	1	6001442	6001442	6001442	6001442	6001442	Clamp
21	1	6001452	6001452	6001452	6001452	6001452	Spacer Block
22	1	680218	680218	680218	680218	680218	Capscrew, M6 x 12
	1	206321	206321	206321	206321	206321	Capscrew, M6 x 16 ■
	1	763169	763169	763169	763169	763169	Capscrew, M6 x 20 ■
23	2	6026756	6026756	6026756	6026756	6026756	Spacer Plate ■
24	2	6026763	6026763	6026763	6026763	6026763	Spacer Plate ■
25	1	6027117	6027117	6027117	6027117	6027117	Alignment Tool ■
26	1	—	—	6014987	—	6014987	Adhesive Tape

● Included in Sheave Assembly 223678

■ Included in Spacer Kit 6030223

# Power Supply/Communication Groups

Maximum Mast Fork Height – 240 in.



# Power Supply/Communication Groups

## Maximum Mast Fork Height – 240 in.

Power Supply Group	Maximum Mast <sup>①</sup> Fork Height (in.)	Conductors <sup>②</sup> (No. @ AWG)	Supply Application
228174	240	2 @ 18	Generic – Switched, 12V
6809416	240	2 @ 18	Generic – Switched, 24V-48V
228719	240	2 @ 18	ERC – Unswitched
228175	240	4 @ 26	AFC – Unswitched
228176	240	2 @ 20 & 4 @ 26	AFC & ERC – Unswitched

① Simplex, dual or triple masts only.

② Do not use 26 AWG for high voltage or high current applications.  
(20 AWG rated @ 5A, 26 AWG rated @ .25A)

AFC: Adaptive Force Control

ERC: Electronic Rotational Control

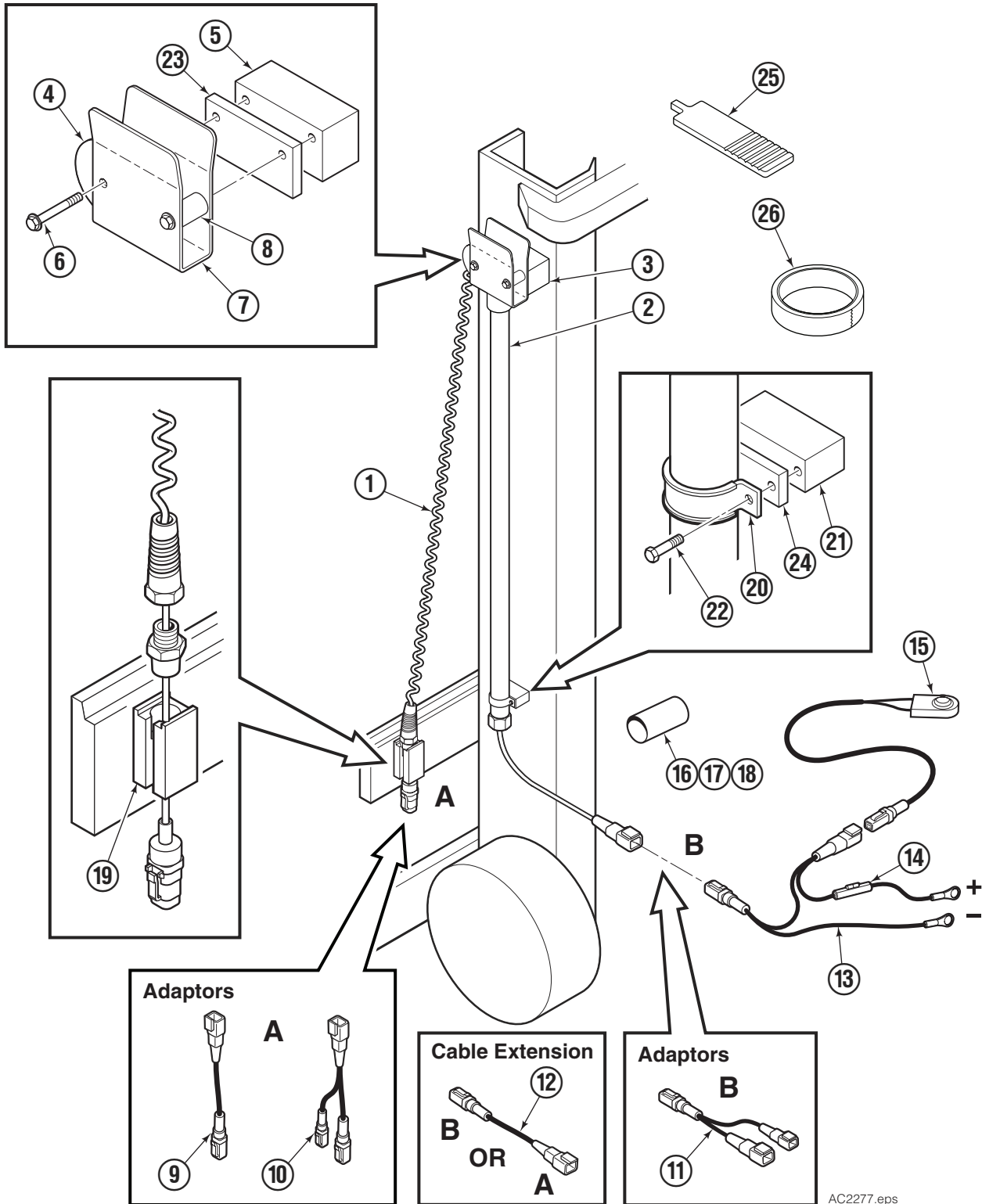
REF	QTY	PART NO.	PART NO.	PART NO.	PART NO.	PART NO.	DESCRIPTION
		228174	6809416	228719	228175	228176	Power Supply Group
1	1	6090454	6090454	6090454	228181	223647	Cable Assembly
2	1	223684	223684	223684	223684	223684	Conduit
3	1	223678	223678	223678	223678	223678	Sheave Assembly
4	1	223680	223680	223680	223680	223680	Sheave ●
5	1	228679	228679	228679	228679	228679	Spacer Block ●
6	2	228704	228704	228704	228704	228704	Capscrew, M8 x 45 ●
	2	6030447	6030447	6030447	6030447	6030447	Capscrew, M8 x 50 ■
	2	6030449	6030449	6030449	6030449	6030449	Capscrew, M8 x 60 ■
7	1	223679	223679	223679	223679	223679	Bracket ●
8	2	223681	223681	223681	223681	223681	Bearing ●
9	1	—	—	—	6017922	6017922	Cable Adapter
10	1	—	—	—	—	6001544	Cable Adapter
11	1	—	—	—	—	6001545	Cable Adapter
12	1	6821338	6821338	6821338	—	6821338	Cable Extension, 3 m
10	1	6001647	6811810	—	—	—	Wire Harness – Power
11	1	—	6806701	—	—	—	Fuse, 2 Amp, UL Classified
	1	6806708	—	—	—	—	Fuse, 5 Amp, UL Classified
	1	219414	—	—	—	—	Fuse, ATC-10, Non UL Classified
12	1	6001637	6001637	—	—	—	Switch
13	1	6001641	6001641	—	—	—	Shrink Tube, 50 ID x 75 mm
14	1	6026933	6026933	—	—	—	Shrink Tube, 28 ID x 75 mm
15	1	6026934	6026934	—	—	—	Shrink Tube, 50 ID x 75 mm
16	1	223698	223698	223698	223698	223698	Anchor
17	1	6001442	6001442	6001442	6001442	6001442	Clamp
18	1	6001452	6001452	6001452	6001452	6001452	Spacer Block
19	1	680218	680218	680218	680218	680218	Capscrew, M6 x 12
	1	206321	206321	206321	206321	206321	Capscrew, M6 x 16 ■
	1	763169	763169	763169	763169	763169	Capscrew, M6 x 20 ■
20	2	6026756	6026756	6026756	6026756	6026756	Spacer Plate ■
21	2	6026763	6026763	6026763	6026763	6026763	Spacer Plate ■
22	1	6027117	6027117	6027117	6027117	6027117	Alignment Tool ■
23	1	6014987	6014987	6014987	6014987	6014987	Adhesive Tape

● Included in Sheave Assembly 223678

■ Included in Spacer Kit 6030223

# Power Supply/Communication Groups

Maximum Mast Fork Height – 320 in.





# Power Supply/Communication Groups

## Maximum Mast Fork Height – 320 in.

Power Supply Group	Maximum Mast <sup>①</sup> Fork Height (in.)	Conductors <sup>②</sup> (No. @ AWG)	Supply Application
6016846	320	2 @ 18	Generic – Switched, 12V
6809417	320	2 @ 18	Generic – Switched, 24V-48V
6016847	320	2 @ 18	ERC – Unswitched
6003598	320	4 @ 26	AFC – Unswitched
6030344	320	2 @ 20 & 4 @ 26	AFC & ERC – Unswitched

① Simplex, dual or triple masts only.

② Do not use 26 AWG for high voltage or high current applications.  
(20 AWG rated @ 5A, 26 AWG rated @ .25A)

AFC: Adaptive Force Control

ERC: Electronic Rotational Control

REF	QTY	PART NO.	PART NO.	PART NO.	PART NO.	PART NO.	DESCRIPTION
		6016846	6809417	6016847	6003598	6030344	Power Supply Group
1	1	6090456	6090456	6090456	6003600	6015681	Cable Assembly
2	1	6003601	6003601	6003601	6003601	6003601	Conduit
3	1	223678	223678	223678	223678	223678	Sheave Assembly
4	1	223680	223680	223680	223680	223680	Sheave ●
5	1	228679	228679	228679	228679	228679	Spacer Block ●
6	2	228704	228704	228704	228704	228704	Capscrew, M8 x 45 ●
	2	6030447	6030447	6030447	6030447	6030447	Capscrew, M8 x 50 ■
	2	6030449	6030449	6030449	6030449	6030449	Capscrew, M8 x 60 ■
7	1	223679	223679	223679	223679	223679	Bracket ●
8	2	223681	223681	223681	223681	223681	Bearing ●
9	1	—	—	—	6017922	6017922	Cable Adapter
10	1	—	—	—	—	6001544	Cable Adapter
11	1	—	—	—	—	6001545	Cable Adapter
12	1	6821338	6821338	6821338	—	6821338	Cable Extension, 3 m
13	1	6001647	6811810	—	—	—	Wire Harness – Power
14	1	—	6806701	—	—	—	Fuse, 2 Amp, UL Classified
	1	6806708	—	—	—	—	Fuse, 5 Amp, UL Classified
	1	219414	—	—	—	—	Fuse, ATC-10, Non UL Classified
15	1	6001637	6001637	—	—	—	Switch
16	1	6001641	6001641	—	—	—	Shrink Tube, 50 ID x 75 mm
17	1	6026933	6026933	—	—	—	Shrink Tube, 28 ID x 75 mm
18	1	6026934	6026934	—	—	—	Shrink Tube, 50 ID x 75 mm
19	1	223698	223698	223698	223698	223698	Anchor
20	1	6001442	6001442	6001442	6001442	6001442	Clamp
21	1	6001452	6001452	6001452	6001452	6001452	Spacer Block
22	1	680218	680218	680218	680218	680218	Capscrew, M6 x 12
	1	206321	206321	206321	206321	206321	Capscrew, M6 x 16 ■
	1	763169	763169	763169	763169	763169	Capscrew, M6 x 20 ■
23	2	6026756	6026756	6026756	6026756	6026756	Spacer Plate ■
24	2	6026763	6026763	6026763	6026763	6026763	Spacer Plate ■
25	1	6027117	6027117	6027117	6027117	6027117	Alignment Tool ■
26	1	—	—	6014987	6014987	6014987	Adhesive Tape

● Included in Sheave Assembly 223678

■ Included in Spacer Kit 6030223

**Do you have questions you need answered right now?**

Call your nearest Cascade Service Department.  
Visit us online at [www.cascorp.com](http://www.cascorp.com)

**AMERICAS**

**Cascade Corporation  
U.S. Headquarters**  
2201 NE 201st  
Fairview, OR 97024-9718  
Tel: 800-CASCADE (227-2233)  
Fax: 888-329-8207

**Cascade Canada Inc.**  
5570 Timberlea Blvd.  
Mississauga, Ontario  
Canada L4W-4M6  
Tel: 905-629-7777  
Fax: 905-629-7785

**Cascade do Brasil**  
Rua João Guerra, 134  
Macuco, Santos - SP  
Brasil 11015-130  
Tel: 55-13-2105-8800  
Fax: 55-13-2105-8899

**EUROPE-AFRICA**

**Cascade Italia S.R.L.  
European Headquarters**  
Via Dell'Artigianato 1  
37030 Vago di Lavagno (VR)  
Italy  
Tel: 39-045-8989111  
Fax: 39-045-8989160

**Cascade (Africa) Pty. Ltd.**  
PO Box 625, Isando 1600  
60A Steel Road  
Sparton, Kempton Park  
South Africa  
Tel: 27-11-975-9240  
Fax: 27-11-394-1147

**ASIA-PACIFIC**

**Cascade Japan Ltd.**  
2-23, 2-Chome,  
Kukuchi Nishimachi  
Amagasaki, Hyogo  
Japan, 661-0978  
Tel: 81-6-6420-9771  
Fax: 81-6-6420-9777

**Cascade Korea**  
121B 9L Namdong Ind.  
Complex, 691-8 Gojan-Dong  
Namdong-Ku  
Inchon, Korea  
Tel: +82-32-821-2051  
Fax: +82-32-821-2055

**Cascade-Xiamen**  
No. 668 Yangguang Rd.  
Xinyang Industrial Zone  
Haicang, Xiamen City  
Fujian Province  
P.R. China 361026  
Tel: 86-592-651-2500  
Fax: 86-592-651-2571

**Cascade India Material  
Handling Private Limited**  
No 34, Global Trade Centre  
1/1 Rambaugh Colony  
Lal Bahadur Shastri Road,  
Navi Peth, Pune 411 030  
(Maharashtra) India  
Phone: +91 020 2432 5490  
Fax: +91 020 2433 0881

**Cascade Australia Pty. Ltd.**  
1445 Ipswich Road  
Rocklea, QLD 4107  
Australia  
Tel: 1-800-227-223  
Fax: +61 7 3373-7333

**Cascade New Zealand**  
15 Ra Ora Drive  
East Tamaki, Auckland  
New Zealand  
Tel: +64-9-273-9136  
Fax: +64-9-273-9137

**Sunstream Industries  
Pte. Ltd.**  
18 Tuas South Street 5  
Singapore 637796  
Tel: +65-6795-7555  
Fax: +65-6863-1368

